



New York City

Manhattan

512/520 Isham Street

a foundation for nearly 100 years



Location: Manhattan: Inwood Section
(Isham Street and Sherman Avenue)

Retail GLA: 3,813 sf

Residential: 65 Apartments

Demographics:

2023	.5 Mile	1 Mile	3 Mile
Population	48,960	151,690	1,008,677
Average HH Income	\$55,665	\$48,559	\$43,765
Total HH	20,401	57,333	370,343
Median Age	38.2	36.5	35.1



MILBROOK PROPERTIES LTD.
CHARLES HIRSCH, PRESIDENT
CHIRSCH@MILBROOKPROPERTIES.COM

T (516) 869-1240

F (516) 869-8576

42 BAYVIEW AVENUE, MANHASSET, NY 11030

WWW.MILBROOKPROPERTIES.COM

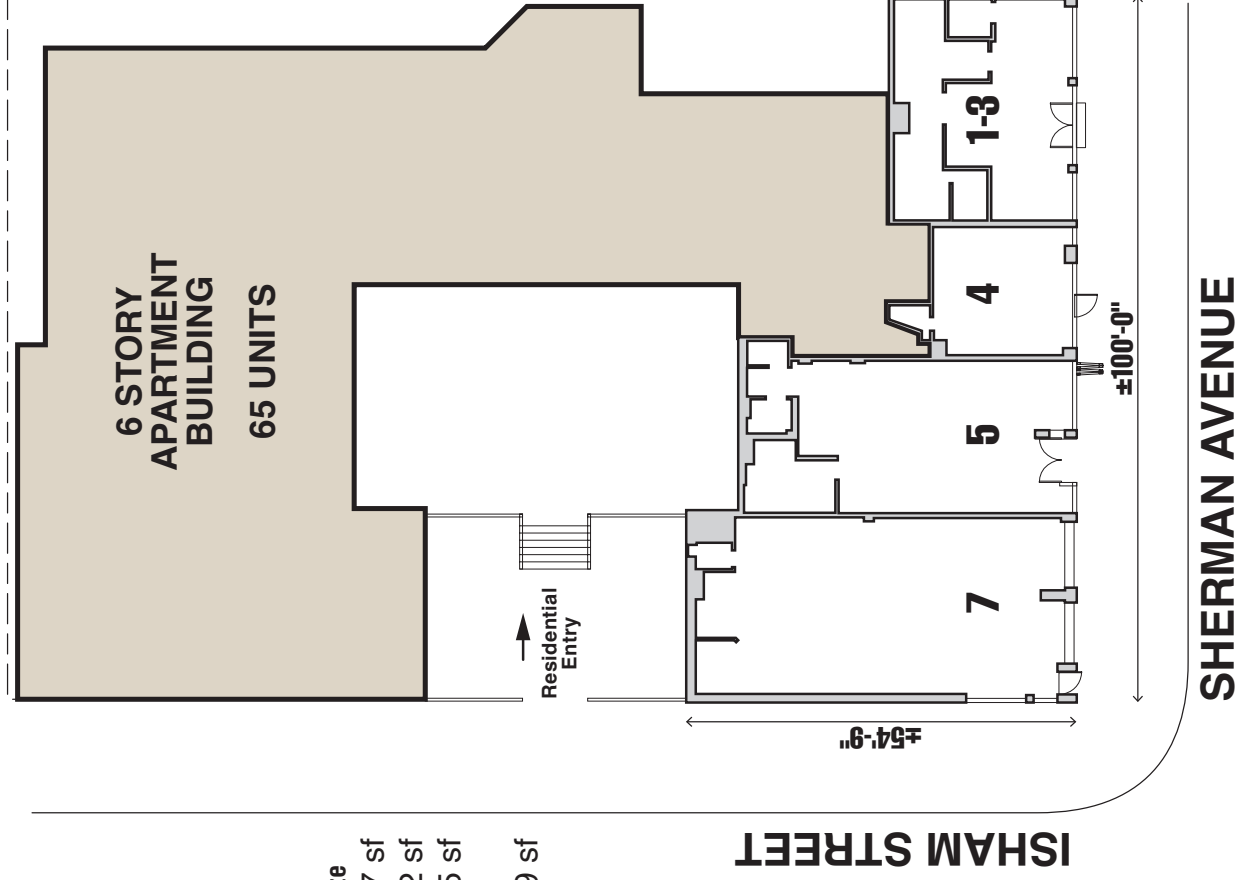
New York City Manhattan

512/520 Isham Street



Store	Addr.	Tenant	Size
1-3.	253	Taco Restaurant	857 sf
4.	255	Lash Lab	412 sf
5.	263	Barber Shop	1,095 sf
7.	265	Laundromat (includes basement)	1,449 sf

all store addresses are located on Sherman Avenue



For information contact:

Charles Hirsch
 President
 Milbrook Properties Ltd.
 42 Bayview Avenue
 Manhasset, NY 11030
 Email: chirsch@milbrookproperties.com
 Tel: (516) 869-1240
 Fax: (516) 869-8576