



East Farmingdale, NY

Suffolk County

Bi-County Commons

a foundation for nearly 100 years



Location: NW Corner of NY State Rte 109 & Bi-County Blvd, 1011-1043 Rte 109, East Farmingdale, NY

Description: Grocery Anchored Shopping Center

Major Tenants: Giunta's Meat Farms, AFC Urgent Care, Bethpage Federal Credit, Verizon

GLA: 69,991 sf ±

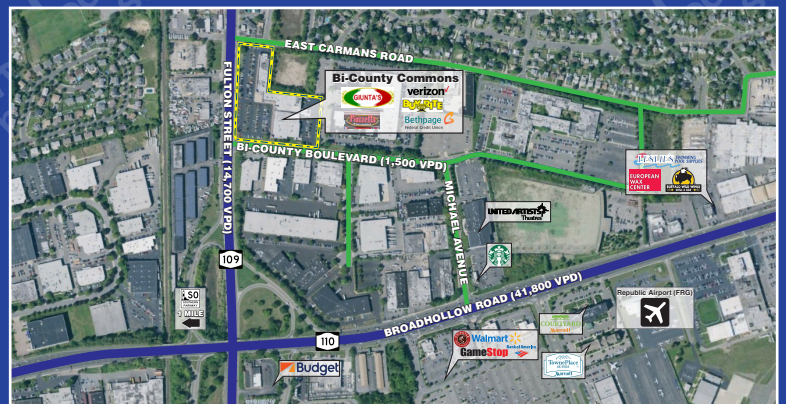
Parking: 334 spaces

Demographics:

2023	1 Mile	3 Miles	5 Miles
Population	12,865	113,722	374,797
Average HH Income	\$113,802	\$118,930	\$122,883
Total HH	4,675	37,732	125,123
Median Age	42.8	41.7	42.7



MILBROOK PROPERTIES LTD.
 CHARLES HIRSCH, PRESIDENT
 CHIRSCH@MILBROOKPROPERTIES.COM
 T (516) 869-1240
 F (516) 869-8576
 42 BAYVIEW AVENUE, MANHASSET, NY 11030
 WWW.MILBROOKPROPERTIES.COM



East Farmingdale, NY

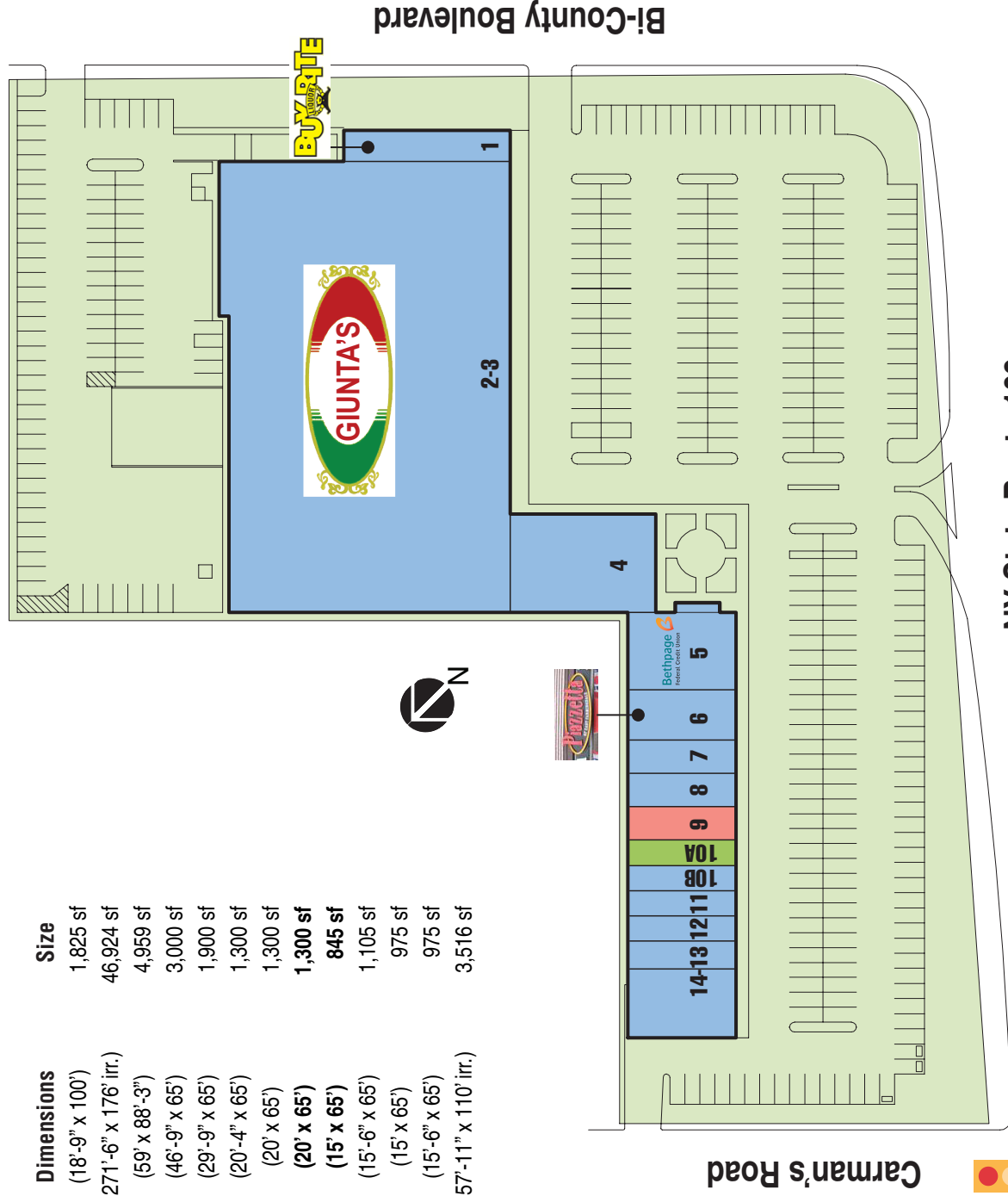
Suffolk County

Bi-County Commons



Store	Addr.	Tenant	Dimensions	Size
1.	1043	Buy Rite Liquors	(18'-9" x 100')	1,825 sf
2-3.	1035	Giunta's Meat Farms	(271'-6" x 176' irr.)	46,924 sf
4.	1037	Urgent Care	(59' x 88'-3")	4,959 sf
5.	1033	Bethpage Federal Credit Union	(46'-9" x 65')	3,000 sf
6.	1031	Pizzeria/Italian Restaurant	(29'-9" x 65')	1,900 sf
7.	1029	Deli	(20'-4" x 65')	1,300 sf
8.	1027	Laundromat	(20' x 65')	1,300 sf
9.	1025	Available	(20' x 65')	1,300 sf
10A.	1023	Pending Availability	(15' x 65')	845 sf
10B.	1021	DollarSignUS	(15'-6" x 65')	1,105 sf
11.	1019	Nail Salon	(15' x 65')	975 sf
12.	1017	Chinese Restaurant	(15'-6" x 65')	975 sf
13-14.	1011-15	Dance Studio	(57'-11" x 110' irr.)	3,516 sf

*all store addresses are located on Fulton Ave (AKA Route 109)
the above dimensions are for illustrative purposes only*



For information contact:

Charles Hirsch
President
Milbrook Properties Ltd.
 42 Bayview Avenue
 Manhasset, NY 11030
 Email: chirsch@milbrookproperties.com
 Tel: (516) 869-1240
 Fax: (516) 869-8576